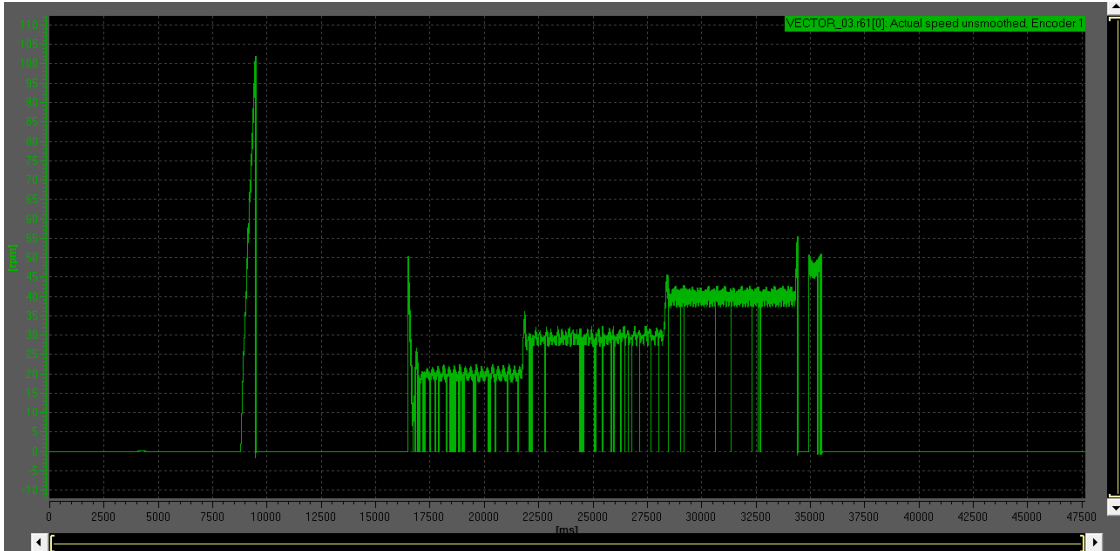


项目现场一：

**现象：**编码器信号很多毛刺，转速超过 100rpm 后根本就监控不到信号。



STARTER - S120\_PN - [Drive\_unit\_1 - Device trace]

Trace 1 running | Drive unit 1

Trace: Function generator | Measurements | Time diagram | FFT diagram | Bode diagram

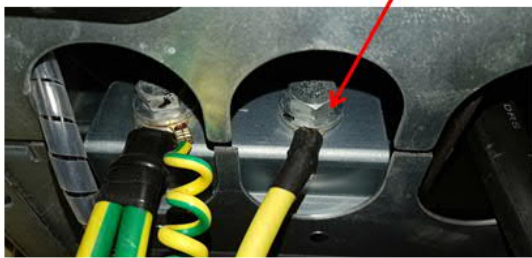
Level	Time [mm/dd/yyyy hh:mm:ss.xx]	Source	Component	Message
Failure	01/01/08 12:56:27.392 pm	Drive_unit_1-VECTOR_03	7-Encoder_7	31118: Encoder 1: Speed difference outside the tolerance range(11398)
Failure	01/01/08 12:56:01.656 pm	Drive_unit_1-VECTOR_03	7-Encoder_7	31119: Encoder 1: Speed difference outside the tolerance range(11404)
Warning	01/01/08 12:55:56.624 pm	Drive_unit_1-VECTOR_03	-	7578: Drive: Encoderless operation due to a fault active
Warning	01/01/08 08:07:19.088 am	Drive_unit_1-CU_S	1-Control_Unit_1	1073: POWER ON: required for backup copy on memory card

Alarms | Trace time diagram | BICO server | Compile/check output | Target system output | Trace info | Load to PG output | Diagnostics overview

Press F1 to open Help display. Intel(R) Dual Band Wireless-AC 8260T Online mode CAP NUM 6:57 PM 7/8/2018

**问题分析与处理：**检查现场发现，电机动力电缆的屏蔽层两端没有接地，按照规范接好后问题解决。

变频器逆变侧动力电缆屏蔽层的接地处理。



电机侧动力电缆屏蔽层的接地处理。

