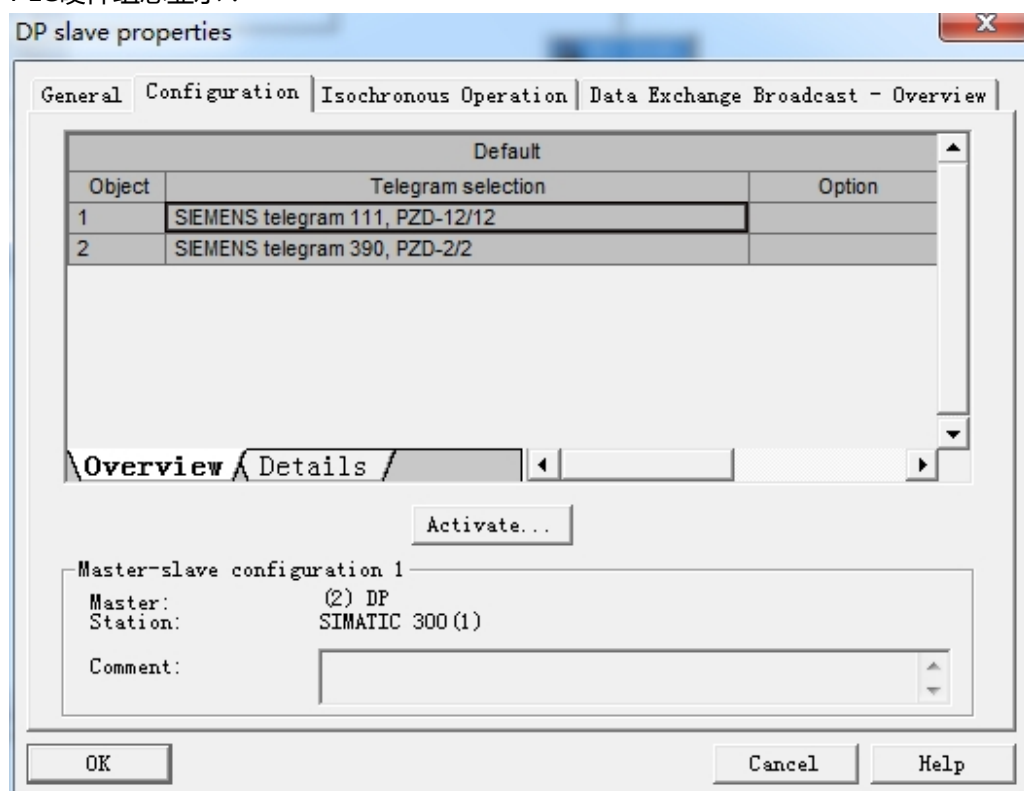


## PLC

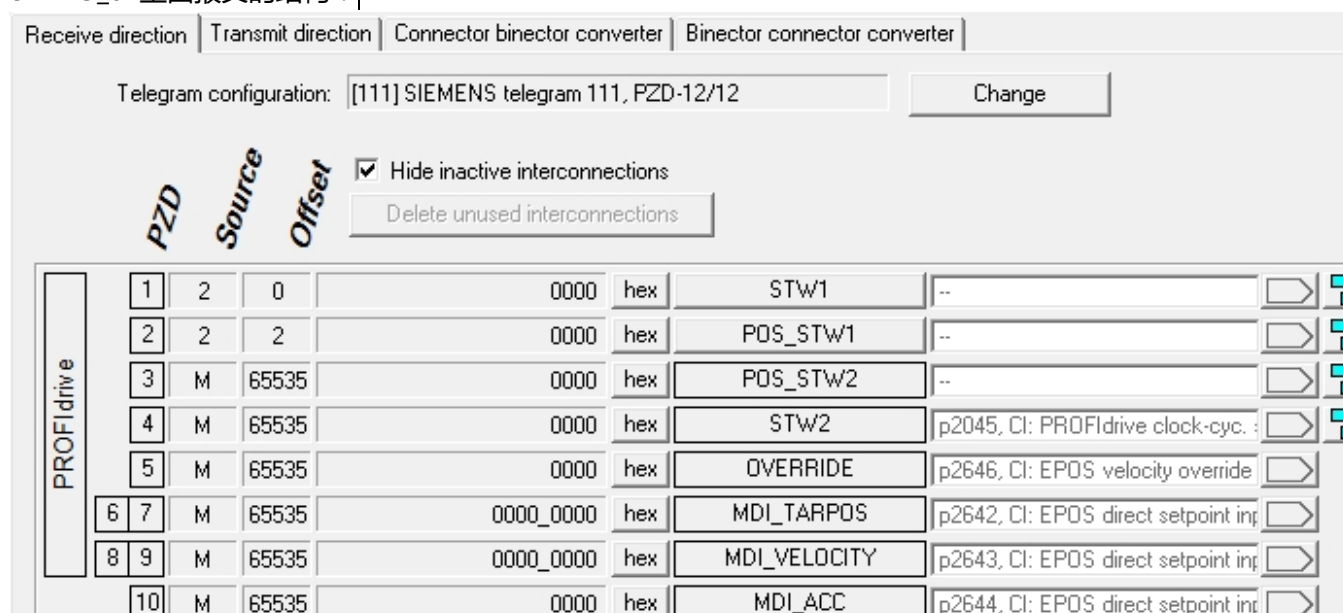
PLC硬件组态显示：



STARTER里面报文显示：

Object	Drive object	-No.	Telegram type		Input data		Output data	
					Length	Address	Length	Address
1	SERVO_02	2	SIEMENS telegram 111, PZD-12/12	✓	12	260..283	12	260..283
2	CU_S_005	1	SIEMENS telegram 390, PZD-2/2	✓	2	256..259	2	256..259
DOs that are not assigned to a slot. (No cyclic data exchange)								

SERVO\_02里面报文的结构：



11 M 65535 0000 hex MDI\_DEC p2645, CI: EPOS direct setpoint ing

Receive direction Transmit direction Connector binector converter Binector connector converter

Telegram configuration: [111] SIEMENS telegram 111, PZD-12/12 Change

☒ Hide inactive interconnections

Delete unused interconnections

PZD  
Offset

PROFIdrive		r2089[0] : CO: Send binector-conn	ZSW1	0000	hex	1	0
		r2089[3] : CO: Send binector-conn	POS_ZSW1	0000	hex	2	2
		r2089[4] : CO: Send binector-conn	POS_ZSW2	0000	hex	3	65535
		r2089[1] : CO: Send binector-conn	ZSW2	0000	hex	4	65535
		r2089[2] : CO: Send binector-conn	MELDw	0000	hex	5	65535
		r2521[0] : CO: LR position actual v	XIST_A	0000_0000	hex	6	7 65535
		r63 : CO: Actual speed smoothed	NIST_B	0000_0000	hex	8	9 65535
		r2131 : CO: Actual fault code	FAULT_CODE	0000	hex	10	65535
		r2132 : CO: Actual alarm code	WARN_CODE	0000	hex	11	65535