



FAQ • 02/2017

# How to use a project file with an out of date firmware with actual firmware version

SINAMICS V90



<https://support.industry.siemens.com/cs/ww/en/view/109745062>

This entry is from the Siemens Industry Online Support. The general terms of use ([http://www.siemens.com/terms\\_of\\_use](http://www.siemens.com/terms_of_use)) apply.

## Security information

Siemens provides products and solutions with industrial security functions that support the secure operation of plants, systems, machines and networks. In order to protect plants, systems, machines and networks against cyber threats, it is necessary to implement – and continuously maintain – a holistic, state-of-the-art industrial security concept. Siemens' products and solutions only form one element of such a concept. Customer is responsible to prevent unauthorized access to its plants, systems, machines and networks. Systems, machines and components should only be connected to the enterprise network or the internet if and to the extent necessary and with appropriate security measures (e.g. use of firewalls and network segmentation) in place. Additionally, Siemens' guidance on appropriate security measures should be taken into account. For more information about industrial security, please visit <http://www.siemens.com/industrialsecurity>.

Siemens' products and solutions undergo continuous development to make them more secure. Siemens strongly recommends to apply product updates as soon as available and to always use the latest product versions. Use of product versions that are no longer supported, and failure to apply latest updates may increase customer's exposure to cyber threats. To stay informed about product updates, subscribe to the Siemens Industrial Security RSS Feed under <http://www.siemens.com/industrialsecurity>.

## Table of content

<b>1</b>	<b>Introduction .....</b>	<b>3</b>
	1.1 Preliminary remark .....	3
	1.2 SINAMICS V-ASSISTANT .....	3
<b>2</b>	<b>How to use a project file with an out of date firmware with actual firmware version .....</b>	<b>4</b>
	2.1 Issue Description .....	4
	2.2 Solution.....	5
<b>3</b>	<b>Contact.....</b>	<b>8</b>
<b>4</b>	<b>History.....</b>	<b>8</b>

# 1 Introduction

## 1.1 Preliminary remark

In a lot cases, the firmware in saved project file is different to the drive at customer site; for example, V1.05 in the project but V1.06 in the drive. When you try to go online with the save project file to make same parameter configurations into the drive, there is an error message reported.

This frequently asked question (FAQ) will show you how to handle this problem.

## 1.2 SINAMICS V-ASSISTANT

### NOTE

The latest version of SINAMICS V-ASSISTANT can be downloaded from the link below:

<https://support.industry.siemens.com/cs/ww/en/view/109738387>

Currently SINAMICS V-ASSISTANT cannot support the operating system of Windows 8 and Windows 10.

SINAMICS V-ASSISTANT engineering tool is designed for faster commissioning and diagnostics for SINAMICS V90 drive. The software runs on a personal computer with Windows operating systems and utilizes graphical user interface to interact with users and communicates with V90 drive via USB. It can be used to modify parameters and monitor status of SINAMICS V90 drive.



## 2 How to use a project file with an out of date firmware with actual firmware version

### 2.1 Issue Description

The SINAMICS V90 firmware versions and corresponding V-ASSISTANT versions are as follows:

Table 2-1

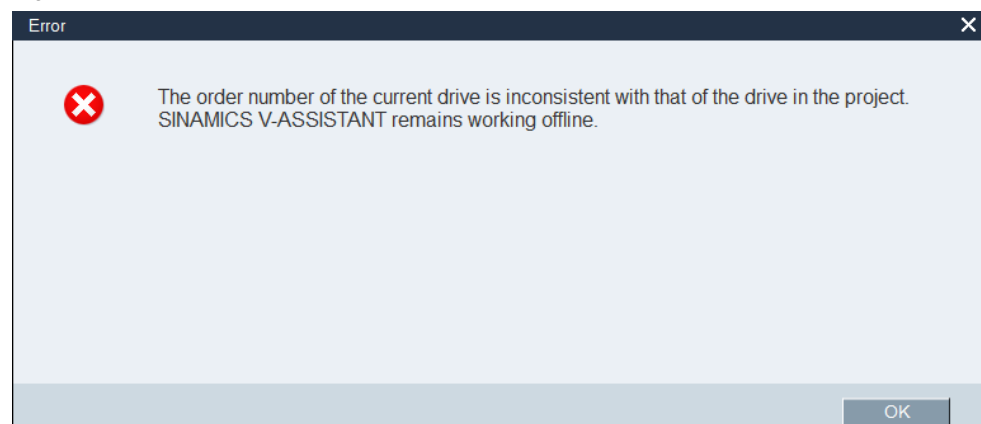
SINAMICS V 90 Firmware Version	Least Required V-ASSISTANT Version
PTI V10400	V1.01.00
PTI V10500	V1.02.00
PTI V10600	V1.03.00
PTI V10600, PN V10000	V1.04.00
PTI V10700, PN V10002	V1.05.00

#### NOTE

The latest V-ASSISANT version is compatible with all the previous versions.

For example, the firmware version in SINAMICS V90 currently is V10600 but the V-ASSISTANT project file has been saved with the firmware version of V10500. If you have updated V-ASSISTANT to V1.03.00 and open the project file, there will be an error message when you are trying to go online for integrating drive parameterizations into current drive:

Figure 2-1



## 2.2 Solution

### NOTICE

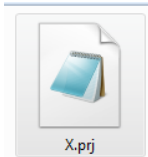
#### Data lost!

Please make a backup of your project file in case that there is a failure for following operations, which may result in data lost.

To solve above-mentioned problem, you can proceed as followings:

1. Find the saved project file (for example, *X.prj*):

Figure 2-2



2. Right-click the project file and open it with Notepad:

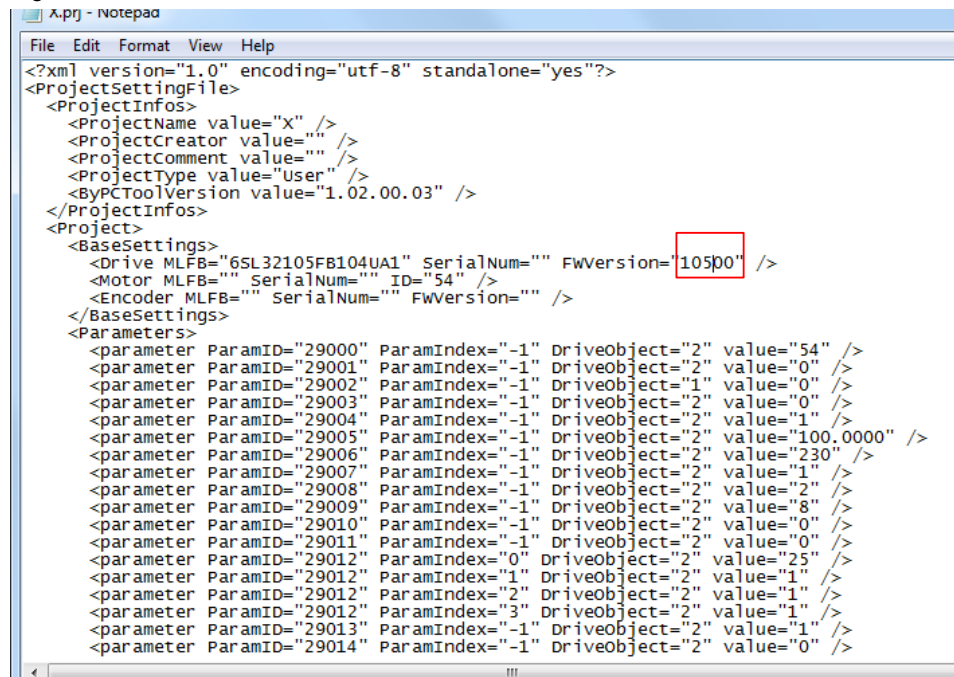
Figure 2-3

 A screenshot of a Notepad window titled 'X.prj - Notepad'. The window displays the XML content of the project file. The XML structure includes project information, base settings, and a list of parameters.
 

```
<?xml version="1.0" encoding="utf-8" standalone="yes"?>
<ProjectSettingFile>
  <ProjectInfos>
    <ProjectName value="X" />
    <ProjectCreator value="" />
    <ProjectComment value="" />
    <ProjectType value="User" />
    <ByPCToolVersion value="1.02.00.03" />
  </ProjectInfos>
  <Project>
    <BaseSettings>
      <Drive MLFB="6SL32105FB104UA1" SerialNum="" FwVersion="105p0" />
      <Motor MLFB="" SerialNum="" ID="54" />
      <Encoder MLFB="" SerialNum="" FwVersion="" />
    </BaseSettings>
    <Parameters>
      <parameter ParamID="29000" ParamIndex="-1" DriveObject="2" value="54" />
      <parameter ParamID="29001" ParamIndex="-1" DriveObject="2" value="0" />
      <parameter ParamID="29002" ParamIndex="-1" DriveObject="1" value="0" />
      <parameter ParamID="29003" ParamIndex="-1" DriveObject="2" value="0" />
      <parameter ParamID="29004" ParamIndex="-1" DriveObject="2" value="1" />
      <parameter ParamID="29005" ParamIndex="-1" DriveObject="2" value="100.0000" />
      <parameter ParamID="29006" ParamIndex="-1" DriveObject="2" value="230" />
      <parameter ParamID="29007" ParamIndex="-1" DriveObject="2" value="1" />
      <parameter ParamID="29008" ParamIndex="-1" DriveObject="2" value="2" />
      <parameter ParamID="29009" ParamIndex="-1" DriveObject="2" value="8" />
      <parameter ParamID="29010" ParamIndex="-1" DriveObject="2" value="0" />
      <parameter ParamID="29011" ParamIndex="-1" DriveObject="2" value="0" />
      <parameter ParamID="29012" ParamIndex="0" DriveObject="2" value="25" />
      <parameter ParamID="29012" ParamIndex="1" DriveObject="2" value="1" />
      <parameter ParamID="29012" ParamIndex="2" DriveObject="2" value="1" />
      <parameter ParamID="29012" ParamIndex="3" DriveObject="2" value="1" />
      <parameter ParamID="29013" ParamIndex="-1" DriveObject="2" value="1" />
      <parameter ParamID="29014" ParamIndex="-1" DriveObject="2" value="0" />
    </Parameters>
  </Project>
</ProjectSettingFile>
```

3. Currently the firmware value in the project file is **"10500"**:

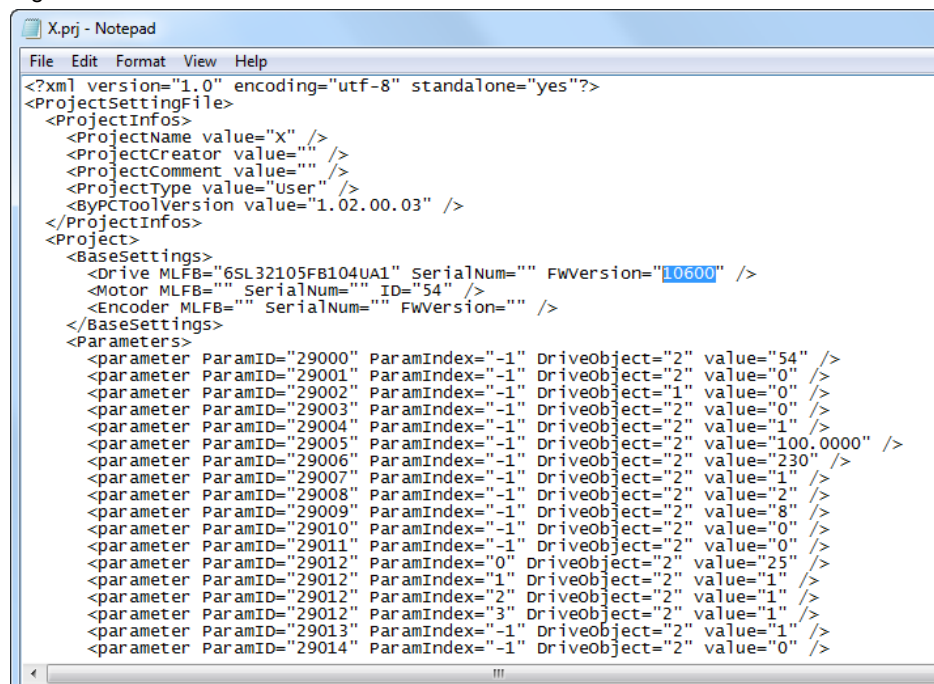
Figure 2-4



```
<?xml version="1.0" encoding="utf-8" standalone="yes"?>
<ProjectSettingFile>
  <ProjectInfos>
    <ProjectName value="x" />
    <ProjectCreator value="" />
    <ProjectComment value="" />
    <ProjectType value="user" />
    <ByPCToolVersion value="1.02.00.03" />
  </ProjectInfos>
  <Project>
    <BaseSettings>
      <Drive MLFB="6SL32105FB104UA1" SerialNum="" FwVersion="10500" />
      <Motor MLFB="" SerialNum="" ID="54" />
      <Encoder MLFB="" SerialNum="" FwVersion="" />
    </BaseSettings>
    <Parameters>
      <parameter ParamID="29000" ParamIndex="-1" DriveObject="2" value="54" />
      <parameter ParamID="29001" ParamIndex="-1" DriveObject="2" value="0" />
      <parameter ParamID="29002" ParamIndex="-1" DriveObject="1" value="0" />
      <parameter ParamID="29003" ParamIndex="-1" DriveObject="2" value="0" />
      <parameter ParamID="29004" ParamIndex="-1" DriveObject="2" value="1" />
      <parameter ParamID="29005" ParamIndex="-1" DriveObject="2" value="100.0000" />
      <parameter ParamID="29006" ParamIndex="-1" DriveObject="2" value="230" />
      <parameter ParamID="29007" ParamIndex="-1" DriveObject="2" value="1" />
      <parameter ParamID="29008" ParamIndex="-1" DriveObject="2" value="2" />
      <parameter ParamID="29009" ParamIndex="-1" DriveObject="2" value="8" />
      <parameter ParamID="29010" ParamIndex="-1" DriveObject="2" value="0" />
      <parameter ParamID="29011" ParamIndex="-1" DriveObject="2" value="0" />
      <parameter ParamID="29012" ParamIndex="0" DriveObject="2" value="25" />
      <parameter ParamID="29012" ParamIndex="1" DriveObject="2" value="1" />
      <parameter ParamID="29012" ParamIndex="2" DriveObject="2" value="1" />
      <parameter ParamID="29012" ParamIndex="3" DriveObject="2" value="1" />
      <parameter ParamID="29013" ParamIndex="-1" DriveObject="2" value="1" />
      <parameter ParamID="29014" ParamIndex="-1" DriveObject="2" value="0" />
    </Parameters>
  </Project>
</ProjectSettingFile>
```

4. You can change this value to **"10600"**:

Figure 2-5



```
<?xml version="1.0" encoding="utf-8" standalone="yes"?>
<ProjectSettingFile>
  <ProjectInfos>
    <ProjectName value="x" />
    <ProjectCreator value="" />
    <ProjectComment value="" />
    <ProjectType value="user" />
    <ByPCToolVersion value="1.02.00.03" />
  </ProjectInfos>
  <Project>
    <BaseSettings>
      <Drive MLFB="6SL32105FB104UA1" SerialNum="" FwVersion="10600" />
      <Motor MLFB="" SerialNum="" ID="54" />
      <Encoder MLFB="" SerialNum="" FwVersion="" />
    </BaseSettings>
    <Parameters>
      <parameter ParamID="29000" ParamIndex="-1" DriveObject="2" value="54" />
      <parameter ParamID="29001" ParamIndex="-1" DriveObject="2" value="0" />
      <parameter ParamID="29002" ParamIndex="-1" DriveObject="1" value="0" />
      <parameter ParamID="29003" ParamIndex="-1" DriveObject="2" value="0" />
      <parameter ParamID="29004" ParamIndex="-1" DriveObject="2" value="1" />
      <parameter ParamID="29005" ParamIndex="-1" DriveObject="2" value="100.0000" />
      <parameter ParamID="29006" ParamIndex="-1" DriveObject="2" value="230" />
      <parameter ParamID="29007" ParamIndex="-1" DriveObject="2" value="1" />
      <parameter ParamID="29008" ParamIndex="-1" DriveObject="2" value="2" />
      <parameter ParamID="29009" ParamIndex="-1" DriveObject="2" value="8" />
      <parameter ParamID="29010" ParamIndex="-1" DriveObject="2" value="0" />
      <parameter ParamID="29011" ParamIndex="-1" DriveObject="2" value="0" />
      <parameter ParamID="29012" ParamIndex="0" DriveObject="2" value="25" />
      <parameter ParamID="29012" ParamIndex="1" DriveObject="2" value="1" />
      <parameter ParamID="29012" ParamIndex="2" DriveObject="2" value="1" />
      <parameter ParamID="29012" ParamIndex="3" DriveObject="2" value="1" />
      <parameter ParamID="29013" ParamIndex="-1" DriveObject="2" value="1" />
      <parameter ParamID="29014" ParamIndex="-1" DriveObject="2" value="0" />
    </Parameters>
  </Project>
</ProjectSettingFile>
```

5. Go online again to connect SINAMICS V90 and it will work.



- When the connection finishes, there will be a dialog box popping-up:

Figure 2-6



- Click the button "**PC to drive**" to finish the data synchronization from the project file to current drive.

## 3 Contact

Siemens Ltd., China  
DF M3-BF GMC  
No. 18 Siemens Road  
Jiangning Development Zone  
Nanjing, 211100  
China  
mailto: [mc\\_gmc\\_mp\\_asia.cn@siemens.com](mailto:mc_gmc_mp_asia.cn@siemens.com)

## 4 History

Table 7-1

Version	Date	Modifications
V0.1	08/2016	First version