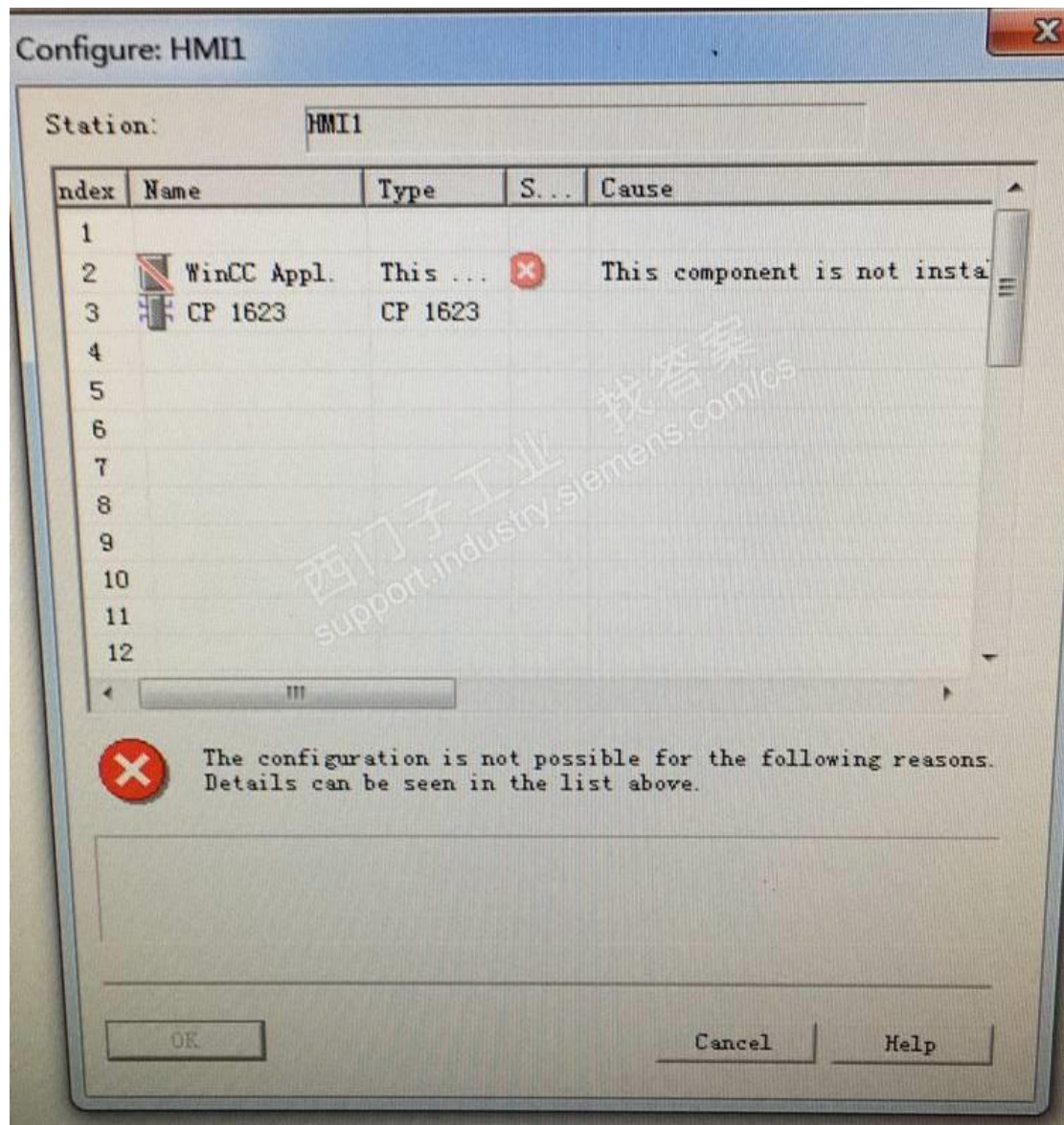


系统为 win10 专业版 和 windows server2012 r2 版均出现如下问题

Step7 v5.6 sp2 wincc7.4 SP1, NET V14, 安装完后, SCE 里添加模块时找不到 wincc application, 在 step7 里组态 PC 站, 添加了 WINCC app, 也组态不到 SCE 里

冗余连接无法实现



Station Configuration Editor - [OFFLINE]



Components | Diagnostics | Configuration Info

Station: HMI1

Mode: RUN\_P

| Index | Name | Type | LED-... | Status | Run/Stop | Conn |
|-------|------|------|---------|--------|----------|------|
| 1     |      |      |         |        |          |      |

**Add Component** [X]

Type: Application  
Application  
CP 1623  
IE General  
OPC Server

Index: \_\_\_\_\_

Name: Application

Parameter assign: \_\_\_\_\_

Properties

OK Cancel Help

Add...

Edit

Delete

Flash LED

Station Name...

Import Station ...

Disable Station

OK

Help