

MMC 的信息与使用

HHD- Send
2017-06-27

首先我们建议您访问 siemens A&D 公司的技术支持网站：

在检索窗口中键入相关产品或问题的 **关键字**，获取关于产品或问题的详细信息和手册。

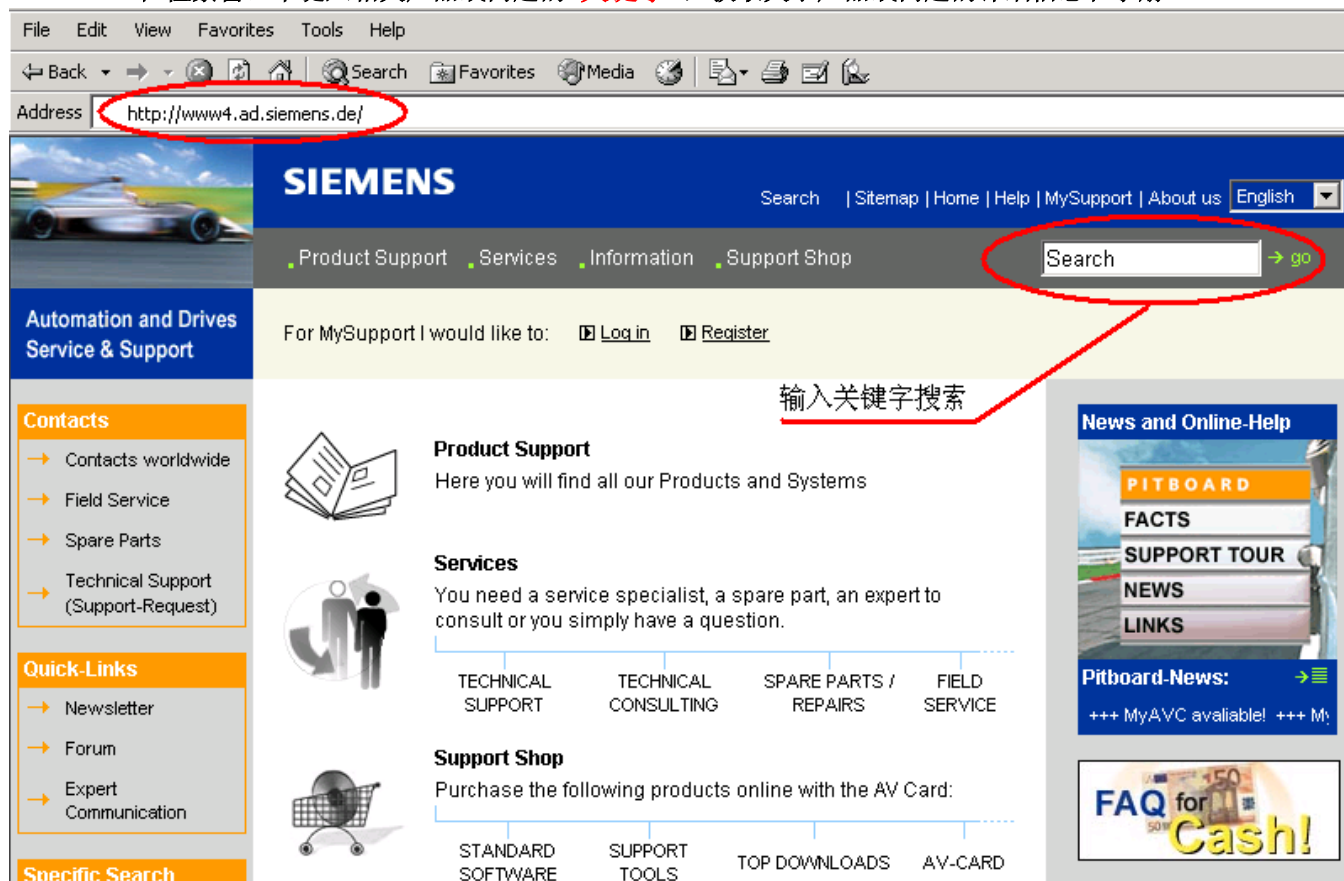


图 1

您可以在 www4.ad.siemens.de 网站的检索窗口中键入 **MMC 等关键字**，获取关于 **MMC、PG 或读卡器 (USB prommer)** 等产品的相关信息。

MMC 卡是西门子新型 PLC 的程序、数据的存储体，目前应用于以下几种 PLC 产品：

订货号

6ES7 314-1AF10-0AB0
6ES7 315-2AG10-0AB0
6ES7 312-5BD00-0AB0
6ES7 313-5BE00-0AB0
6ES7 313-6CE00-0AB0
6ES7 313-6BE00-0AB0
6ES7 314-6CF00-0AB0
6ES7 314-6BF00-0AB0
6ES7 613-1CA00-0AE3
6ES7 635-2EC00-0AE3
6ES7 635-2EB00-0AE3
6ES7 151-7***-0AB0

产品名称

新型 CPU 314
新型 CPU 315-2DP
CPU 312C
CPU 313C
CPU 313C-2DP
CPU 313C-2PTP
CPU 314C-2DP
CPU 314C-2PTP
C7 613
C7 635 OP
C7 635 OP
ET200S with CPU

注：以上产品的订货号会因为产品软硬件的升级略有调整，产品特性以产品名称为准。

1. 在订购以上产品时，PLC 本身不带有 MMC 卡，所以为了正常使用 PLC，您必须根据您工程项目实际需求订购一个大小适用的 MMC 卡，如果您的 PLC 上未插入 MMC 卡，你是无法将 STEP7 中的程序和数据下载下去的，同时你应当注意，不能带电插拔 MMC 卡，否则会丢失程序或损坏 MMC 卡。
2. 在 Simatic manager 中，选择一个程序块下载，则该块被下载到 MMC 卡中，如果在窗口左边的树型图中选中 Block 文件夹进行下载，则所有的块被下载到 MMC 卡上，MMC 中原有的信息将被覆盖，向 MMC 卡读写数据或下载程序的次数不受限制。
3. 除过 CPU 中集成的 SFB/SFCs 块外，MMC 当中其他的块可被在线删除。
4. 对某些 CPU 用新版 MMC 卡（6ES7 953-XXX10-0AA0）替代旧版 MMC 卡（6ES7 953-XXX00-0AA0）时需要升级 PLC 的 OPERATING SYSTEM。升级时需要使用 PG（6ES7798-0BA00-0XA0）或带 USB 口的编程器（6ES7792-0AA00-0XA0），通过 STEP7 MANAGER 窗口中的菜单功能“PLC/UPDATE OPERATING SYSTEM”将 CPU_HD.UPD 文件写到 MMC 卡上，CPU_HD.UPD 文件可以在 www4.ad.siemens.de 网站上下载得到。
5. MMC 卡作为 CPU 的装载内存（Load Memory），在为您的 CPU 选型 MMC 的时候，我们建议您所选的 MMC 卡一定要大于等于您所选定的 CPU 工作内存的大小（work memory），最好比工作内存大一些，但如果您的应用中，PLC 工作时要使用大量的过程数据，历史数据，配方数据等或控制工艺中存在较多的用户程序块、STEP7 中的应用功能块（如 FB41、FB42 等）时，建议选用 2—8M 的 MMC 卡，但请注意只有 314、315—2DP、C7 系列的 PLC 支持 8M 的 MMC 卡。
6. MMC 卡是装载内存，所以不能够在上位机中的组态软件中直接读取 MMC 卡上的数据值（DB 块中的数据），组态画面读取的是 PLC RAM 内存中的数据。
7. 在西门子的 PLC 上必须使用西门子专用的 MMC 卡，如下表中所列出的，不能使用数码相机、移动电话或 PDA 等数码产品使用的通用型 MMC 卡。

The order numbers for MMC cards are in the following table:

Micro Memory Card / S7-300	Order number
64 Kbytes	6ES7 953-8LF11-0AA0
128 Kbytes	6ES7 953-8LG11-0AA0
512 Kbytes	6ES7 953-8LJ11-0AA0
2 Mbytes	6ES7 953-8LL11-0AA0
4 Mbytes	6ES7 953-8LM11-0AA0
8 Mbytes	6ES7 953-8LP11-0AA0

MMC 常见问题列表

QUESTION 1：如何确定STEP7 中的工程项目需要使用多大空间的MMC卡？

QUESTION 2：MMC卡上存储程序块或数据块的限制是什么？

QUESTION 3：如何删除MMC卡上的数据或程序？

QUESTION 4 : 31X型PLC插入MMC卡后, STOP灯不停闪烁, 怎么办? 或 如何格式化MMC?

QUESTION 5 :插入MMC卡的S7300 PLC不能正常调用SFC54 程序块?

QUESTION 6 : 采用MMC卡的S7300 和C7613, 635 系列CPU是如何完成数据保持功能的?

QUESTION 7 : 我如何将一些系统文件或是项目相关的文件存储到MMC上?

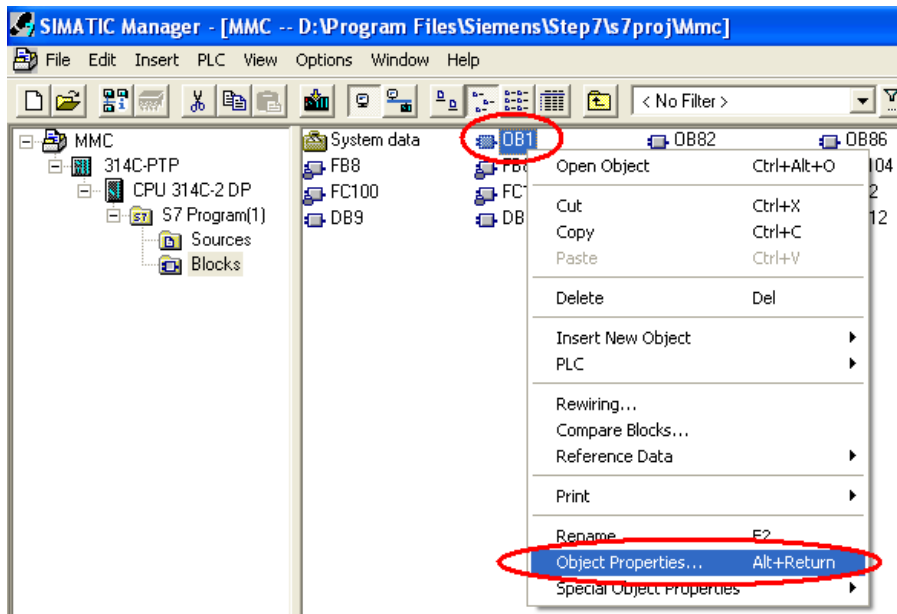
QUESTION 8 : 我想将我的STEP7 项目完整地保存在MMC卡上, 该选择多大的MMC?

QUESTION 9 : 我对插入MMC卡的S7300PLC进行了加密, 但我忘记了密码, 如何才能对MMC解密, 或删除MMC卡上的密码?

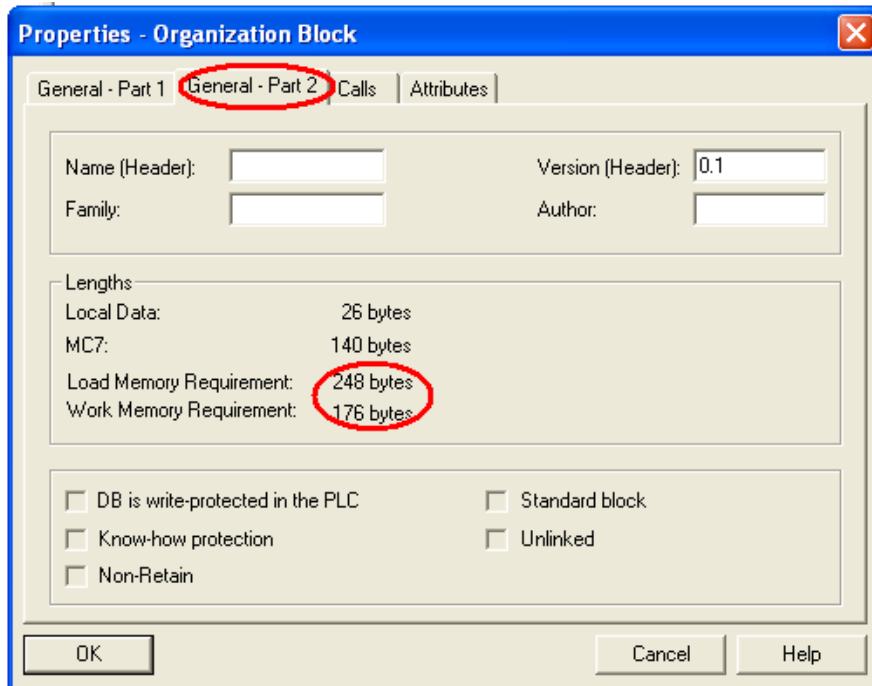
QUESTION 1 : 如何确定 STEP7 中的工程项目需要使用多大空间的 MMC 卡?

Answer : 确定您的控制程序所需的 MMC 卡的大小, 可以按以下步骤进行:

1. 在 STEP7 Manager 中打开您的 Project;
2. 选中您的程序块, 点击鼠标右键 (或快捷键 Alt + Enter), 打开程序块的属性页面:

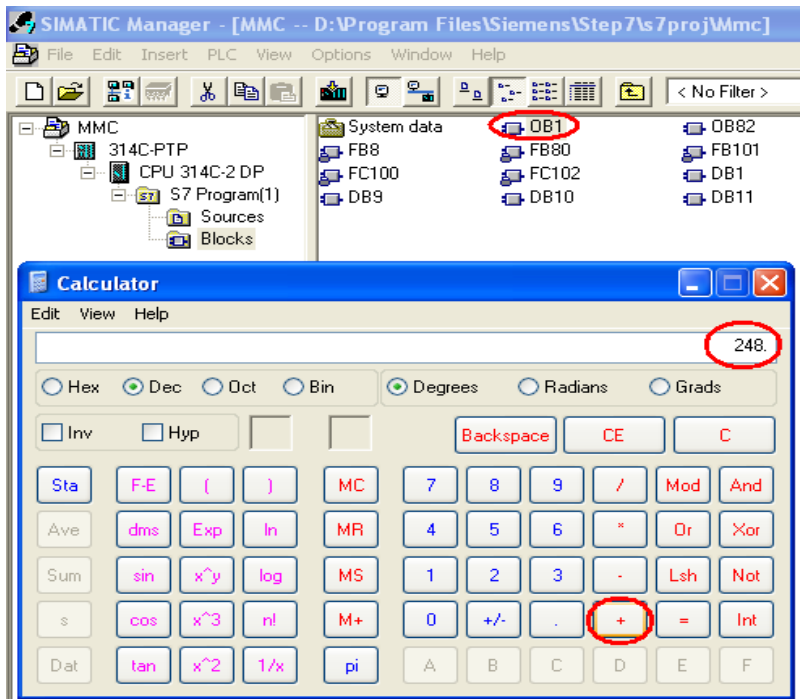


3. 选择弹出窗口中的 General-Part 2 页面:

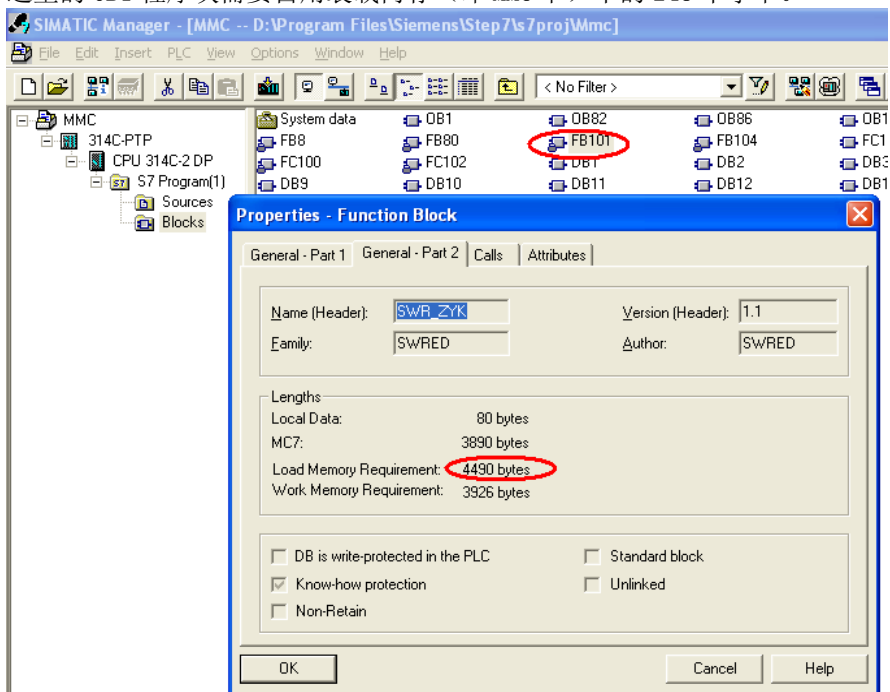


从上图中可以看出您的某个程序块在 PLC 中占用装载内存和工作内存的字节数。

4. 将您项目中所有程序块 (OB、FC、FB、DB) 占用装载内存 (Load Memory Requirement) 的数量加在一起:

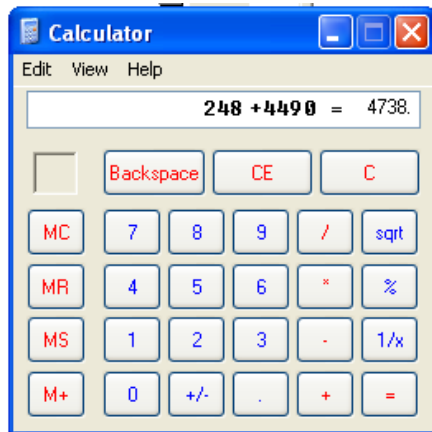


这里的 OB1 程序块需要占用装载内存（即 MMC 卡）中的 248 个字节。



这里的 FB101 程序块需要占用 MMC 卡中的 4490 个字节。

将 OB、FB、FC、DB（不包括 SFC、SFB、System data）所需占用的字节数加在一起：



得到的总的字节数量在除以 1024，就可以知道您的 Project 中的程序块需要多大的 MMC 卡空间。

5. 如果您已经有 Siemens 的 PLC 和 MMC，那么您可以通过在线诊断，获取 PLC 工作内存和装载内存（MMC 卡）的使用情况。

在 STEP7 Manager 界面中，选中 CPU，用 CP5611 或 PC-Adapter 连接 PLC 的 MPI 通讯口，使用快捷键 Ctrl + D，弹出 PLC 的诊断信息窗口：

当 MMC 卡未插入 PLC 中时：

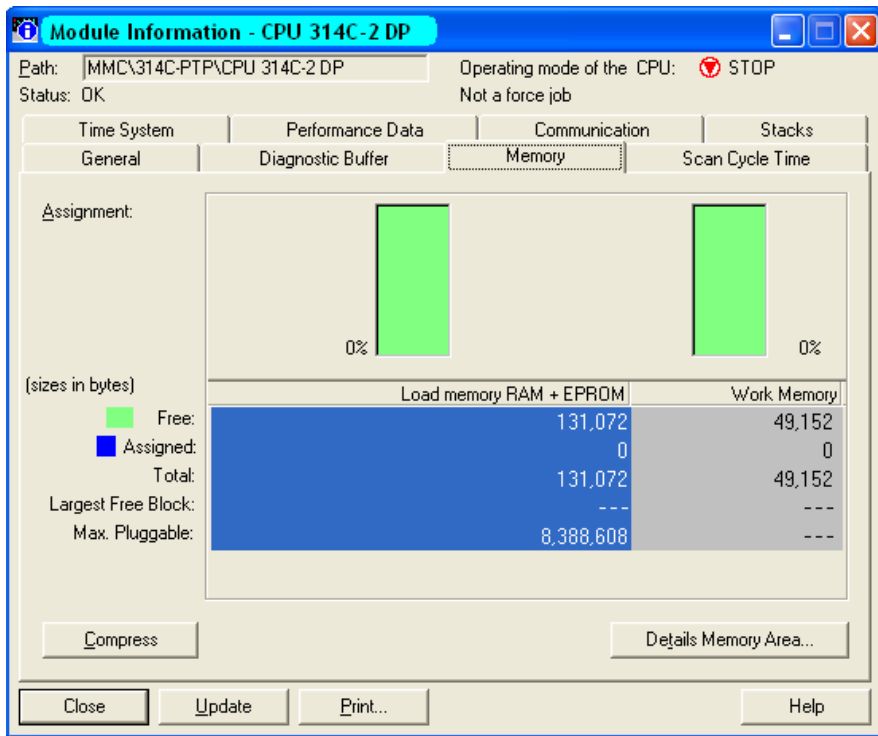
Category	Load memory RAM + EPROM	Work Memory
Free:	---	49,152
Assigned:	---	0
Total:	---	49,152
Largest Free Block:	---	---
Max. Pluggable:	8,388,608	---

48K的工作内存

因为 PLC 中没有插入 MMC 卡，Load memory RAM + EPROM 列为空，Work Memory 列中显示当前 PLC 的工作内存为 48K，EPROM 是 S7-400、旧款 S7-300 使用的装载内存卡；

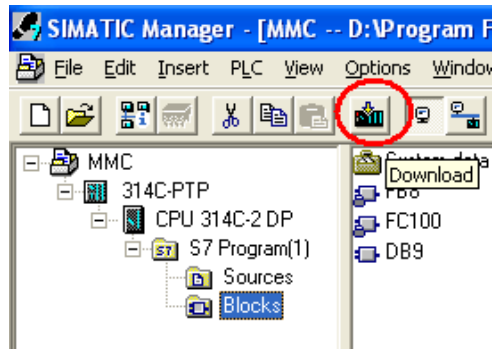
在 PLC 中插入 MMC 卡时，

使用快捷键 Ctrl + D 弹出 PLC 的内存使用情况：

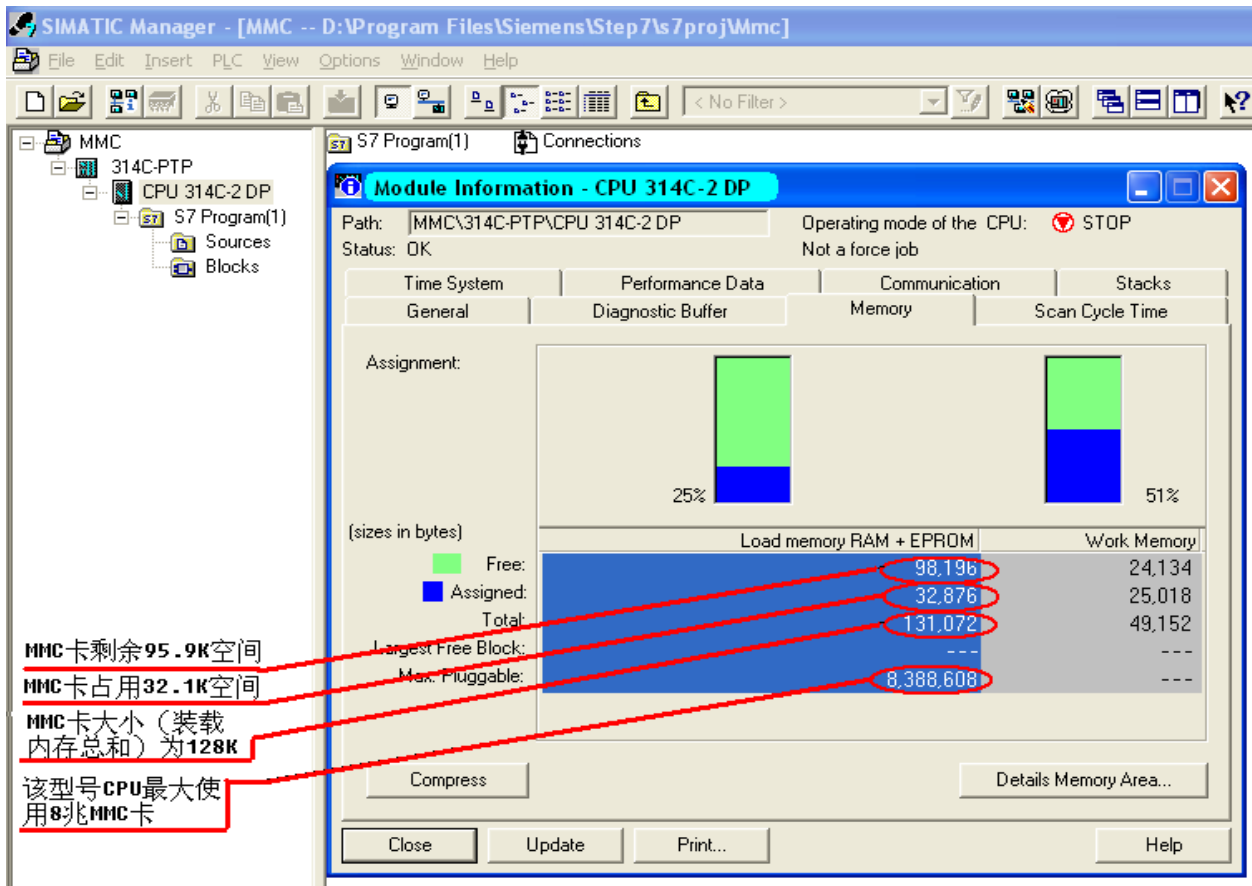


可以看出 PLC 的内存使用情况为 0%，空余 128K 装载内存和 48K 工作内存；

将您的程序下载到 PLC 当中：



使用 Ctrl + D 弹出 PLC 的内存使用情况：



可以看出，您的控制程序在 PLC 中对装载内存和工作内存的占用情况。

[返回](#)

QUESTION 2 : MMC 卡上存储程序块或数据块的限制是什么？

Is there any restriction to the number of blocks I can load onto an MMC (Micro Memory Card)?

ANSWER:

Yes, there is a limited number of blocks you can load onto an MMC depending its size as shown by the table below:

Type	MLFB	Maximum number of blocks
MMC 64KB	6ES7953-8LF11-0AA0	768
MMC 128KB	6ES7953-8LG11-0AA0	1024
MMC 512KB	6ES7953-8LJ11-0AA0	2560
MMC 2MB	6ES7953-8LL11-0AA0	6528
MMC 4MB	6ES7953-8LM11-0AA0	12672

Table 1: Maximum number of blocks on an MMC

Please note here the applicable quantity framework for each CPU (number of blocks altogether).

[返回](#)

QUESTION 3 : 如何删除 MMC 卡上的数据或程序?

How can I delete the data or program on a MMC (Micro Memory Card)?

You can use the following procedure to delete the block on an MMC in the CPU:

1. The MMC to be deleted is slotted in the CPU.
2. In the SIMATIC Manager, switch to online mode via "View > Online" or by pressing the appropriate button.
3. In the Online window, you select the block folder.
4. Select all the blocks in the folder which you want to delete.
5. Click the "Delete" key on your PC keyboard (you can acknowledge the message that system functions cannot be deleted).

[返回](#)

QUESTION 4 : 31X 型 PLC 插入 MMC 卡后, STOP 灯不停闪烁, 怎么办? 或 如何格式化 MMC?

Why does the STOP LED flash on my CPU 31xC when the MMC (Micro Memory Card) is slotted? The CPU does not behave like this with other MMCs.

ANSWER:

The MMC in your CPU is not formatted or contains data that cannot be interpreted by this CPU (e.g. the configuration of a different CPU type or an operating system not compatible with the CPU).

WARNING:

When you format the MMC **all the data** that is located on the MMC is **deleted!**

Proceed as follows to format the MMC.

1. Your CPU requests an overall reset (slow flashing of the STOP LED).
2. Put the switch into the MRES position and hold it there until the STOP LED lights permanently (approx. 9 seconds).
3. You must then release the switch within the next 3 seconds and then put it back into the MRES position. The STOP-LED now flashes during formatting.

If the MMC cannot be formatted as described above, then the MMC is defective.

NOTE:

It is only possible to format the MMC if there is data located on the MMC that is invalid for the CPU. Otherwise the MMC is only initialized through the steps described.

More information on the MMC is available in Entry ID: 8861901

[返回](#)

QUESTION 5 :插入 MMC 卡的 S7300 PLC 不能正常调用 SFC54 程序块?

Why does the SFC 54 "RD_DPARM" not work with the new S7-300 CPU with MMC?

ANSWER: ;

In the new S7-300 CPUs with micro Memory Card, SFC 54 "RD_DPRARM" for reading out a data record of a chosen block of the system data configured with STEP 7 has been replaced by SFC 102 "RD_DPARA".

SFC 102 "RD_DPARA", in contrast to the old SFC 54 "RD_DPARM" is an asynchronously executed system function. This means that the processing is extended over various SFC calls.

Blocks containing SFC 54 "RD_DPARM" can not be loaded to a new S7-300 CPU with MMC. Therefore, please replace the call fo the SFC 54 "RD_DPARM" by the call of the SFC 102 "RD_DPARA" and adjust your programming logic to the asynchronous behaviour of the SFC 102 "RD_DPARA" an.

Below, you will find a comparison of the two system functions:

SFC 54 "RD_DPARM"	SFC 102 "RD_DPARA"	Observations
Inputs		
---	REQ	Function will be executed only with REQ=1; new for SFC 102
I0ID	---	Parameter has been dropped for SFC 102; see LADDR
LADDR	LADDR	SFC 54: any block address, specification of the E resp. A address range over I0ID ((B#16#54=Peripherie Eingang; B#16#55=peripheral output) SFC 102: any block address; Specification of the E resp. A address range over bit 15 of LADDR (most significant bit) Bit15=0 -> peripheral input Bit15=1 -> peripheral output
RECNUM	RECNUM	use identically
Output		
RET_VAL	RET_VAL	use identically; however, there are additional error numbers for SFC 102 at disposition.

---	BUSY	BUSY=1; the order has not been finished so far, there are no results at disposition
RECORD	RECORD	use identically

Table 1: Comparison SFC 54 and SFC 102

[返回](#)

QUESTION 6 : 采用 MMC 卡的 S7300 和 C7613, 635 系列 CPU 是如何完成数据保持功能的?

How does the remanence function of the S7-300 CPUs and C7-613 and C7-635 compact devices work with Micro Memory Card?

ANSWER:

The remanence characteristics described below affect the S7-300 compact CPUs, S7-300 modular CPUs and the C7-613 and C7-635 compact devices with MMC. We describe the remanence characteristics after changes in operating mode in terms of data blocks, times, counters and markers.

Data blocks:

- **CPU STOP/RUN or Power OFF/ON**

1. Database contents of CPUs 31xC, 312, 314, 315-2DP, C7-613 and C7-635 are always remanent.

2. The DBs can be defined as remanent or non-remanent for the CPU 317-2DP.

Therefore, a setting in STEP 7 (V5.2 +SP1) is required for CPU317-2DP:

- An explanation for the activation or deactivation of the option "Non-Retain" in the block properties of the DB, can be found in the entry-ID: [17146856](#) or
- a DB was created with SFC 82 "CREA-DBL". While creating a DB with SFC 82 it is determined in the attributes of the DB in Bit 2, whether the DB shall get remanent or not.

Note:

Only 256K bytes of the main memory (512 Kbyte) can be used for remanent data blocks at a CPU 317-2DP! No remanent DB

will be created anymore and the value 80B2 (not sufficient main memory) will be displayed, if the main memory is too small for remanent data blocks.

- **Memory reset (MRES)**

1. The data will be reset to the values in the loading memory (initial value). These are the last current values which were loaded with the PG into the CPU or which were written with the SFC84 into the loading memory.
2. All blocks of the loading memory remain unchanged. The data blocks are initialized in the main memory.

- **CPU Power OFF -> pull MMC -> Power ON -> Power OFF -> plug MMC -> Power ON**

1. The data are reset to the values in the loading memory. These are the last current values which were loaded from the PG into the CPU or written into the loading memory with SFC84.
2. All blocks of the loading memory remain unchanged. The data blocks are initialized in the main memory.

Note:

If it is required to safeguard current data, those have to be saved on the MMC (loading memory). SFC84 can be used for this purpose. The frequency of the write accesses on the loading memory is critical because a MMC only allows 100,000 write accesses.

Markers, times and counter:

These operand areas can be defined as remanent or non-remanent in the HW configuration under "Object properties CPU > remanence".

- **CPU STOP/RUN or Power OFF/ON**

These operand areas keep their values if they were defined remanent. Otherwise they lose the values and will be initialized with "0".

- **Memory reset (MRES)**

These operand areas are deleted during the memory reset, regardless whether they were defined remanent or non-remanent.

- **CPU Power OFF -> Remove MMC -> Power ON -> Power OFF -> Insert MMC -> Power ON**

If they were defined as remanent, these operand areas retain their values. Otherwise they lose their values and initialize with "0". This characteristic applies if the same unchanged MMC is inserted again.

QUESTION:

What does "Non-Retain" mean in the Properties - Data Block dialog?

ANSWER:

In STEP 7 version V5.2 + SP1 and higher you have the option of selecting the property "Non-Retain" in "Properties - Data Block" in the "General - Part 2" tab. You can define the remanence behavior of data blocks with this option.

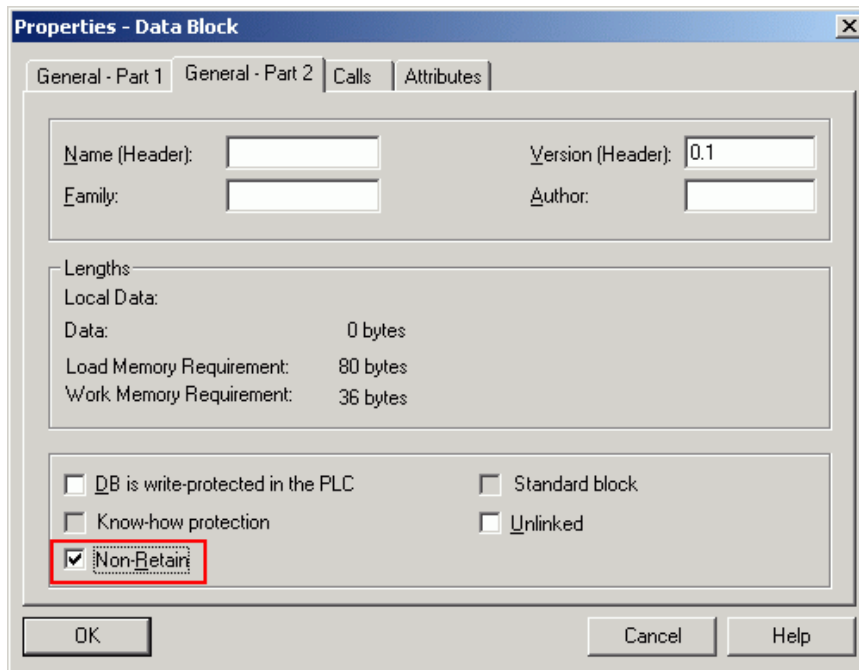


Fig. 1: Properties - Data Block

The requirement for this option is that the CPU supports the Retain property of data blocks.

A data block with the property "Non-Retain" is not stored in the remanence memory in a CPU 317 -2DP and is thus reset to the original load values at each power OFF/ON or each STOP-RUN transition of the CPU.

A data block with the "Non-Retain" property occupies RAM space as usual, but no remanence memory space.

Note:

The CPU 317-2DP has a RAM of 512 KB, but only 256 KB of data can be retained

[返回](#)

QUESTION 7 : 我如何将一些系统文件或是项目相关的文件存储到 MMC 上?

Can I also save other files that belong to the project or system on the MC/MMC?

ANSWER:

You can save any file connected with the system on the MC/MMC.

Procedure:

- Slot the memory card or micro memory card into the PG.

- Open the SIMATIC-Manager.
- Go to "File > S7-Memory Card > Open".
- Then go to "PLC > Save to Memory Card ...".

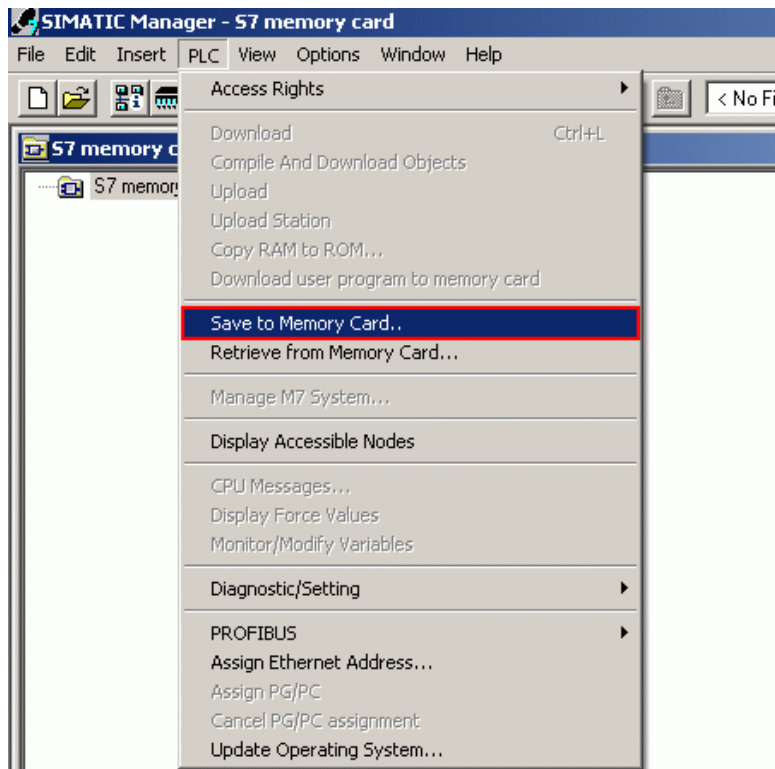
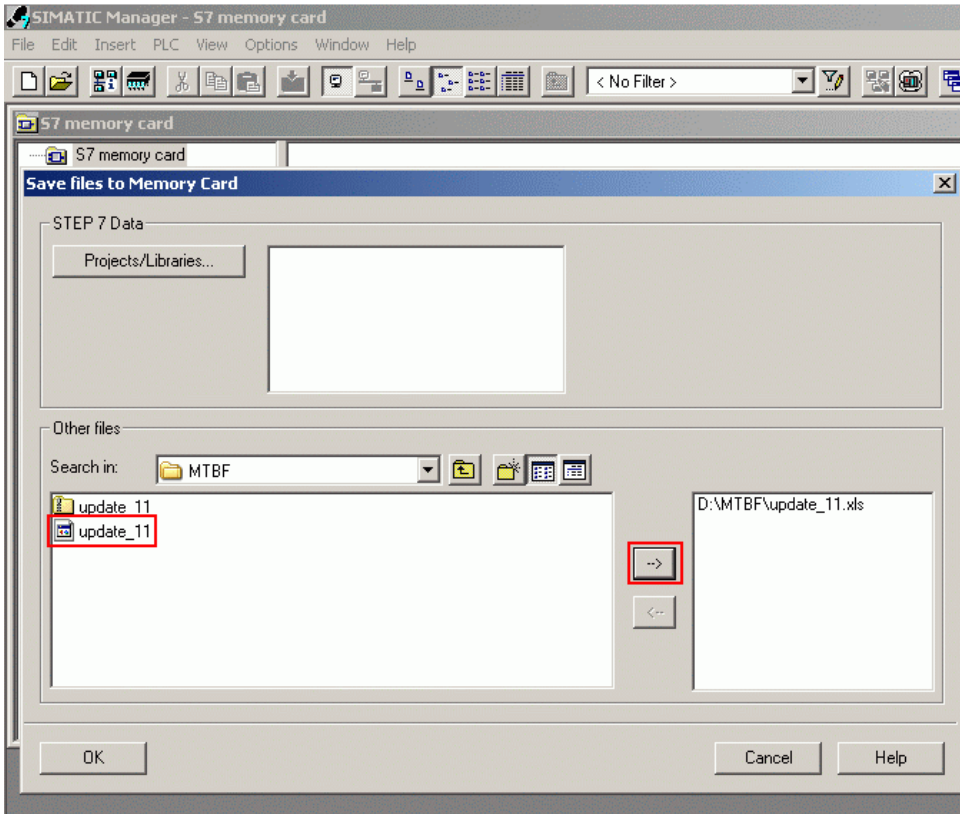


Fig. 1: SIMATIC Manager – S7 memory card

- In the left file explorer you select the required file and mark it for saving with the "→" button.



- If you want to remove files again from the selection, use the "<--" button.
 - Click "OK" to save the selected data to the memory card or micro memory card.
- You receive an acknowledgment once the data has been saved.
- Then the data transferred is displayed in the "S7 Memory Card" window.

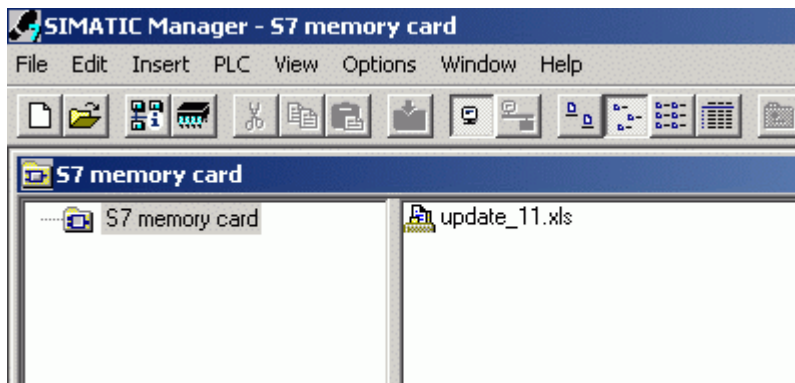


Fig. 3: View of data in memory card window

Note:

You can only use this function for an S7-300 Micro Memory Card and S7-400 Flash EPROM card.

[返回](#)

QUESTION 8 : 我想将我的 STEP7 项目完整地保存在 MMC 卡上, 该选择多大的 MMC?

How can I determine the size of the MMC so that I can store my complete STEP 7 project on it?

ANSWER:

In order to choose the appropriate MMC for your project you need to know the overall size of the project and the size of the blocks to be loaded. You can determine the size of the project as described below:

First archive your STEP 7 project. Then open the archived project in Windows Explorer and determine its size (select and right-click). This gives you the size of the archived file.

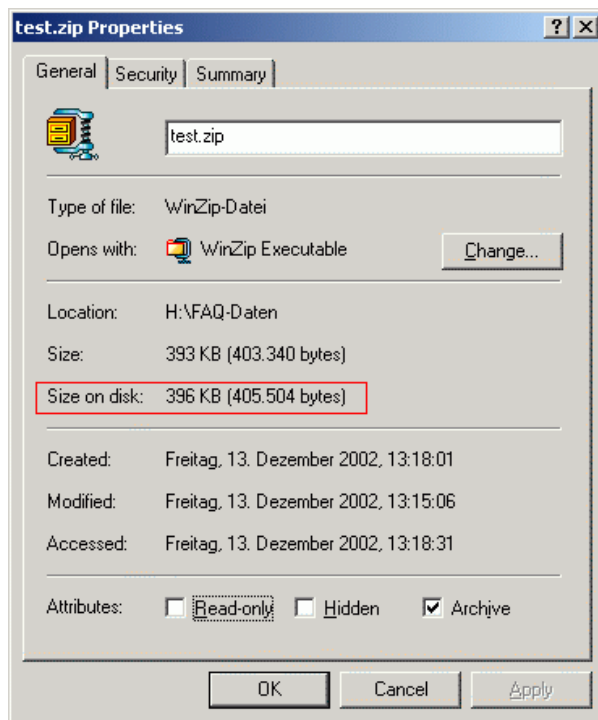


Fig. 1: File properties

Load your blocks into the CPU. Now you still have to select "PLC > Module Information > Memory". There, in "Load memory RAM + EPROM", you can see the size of the assigned load memory.

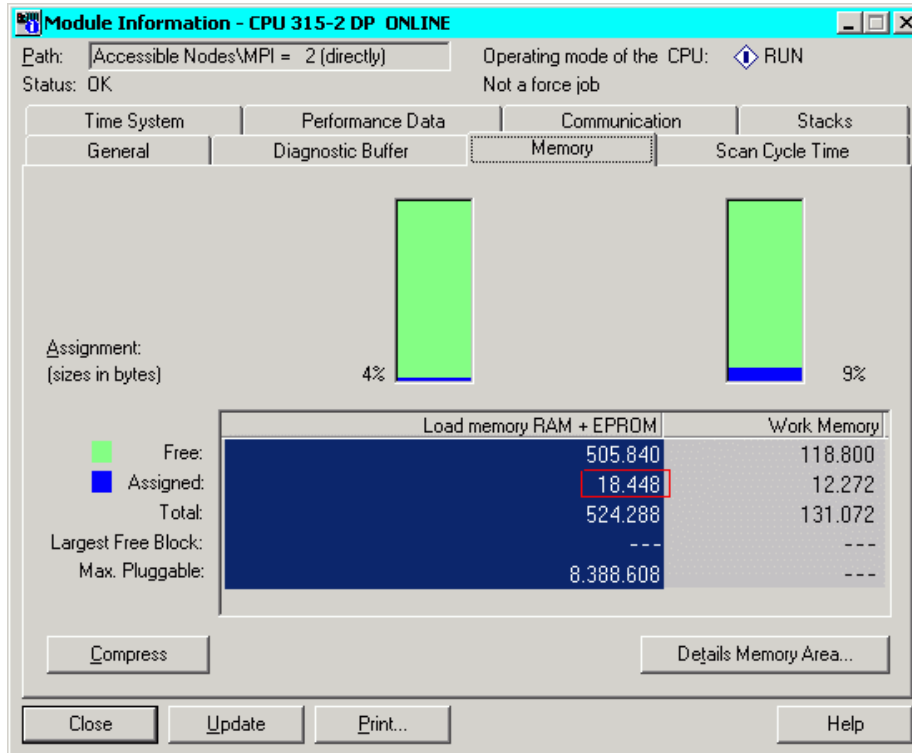


Fig. 2: Load memory

You must add this value to the size of the archived project you have already determined. This gives you the overall amount of memory required to store your complete project on an MMC.

[返回](#)

QUESTION 9 : 我对插入MMC卡的S7300PLC进行了加密, 但我忘记了密码, 如何才能对MMC解密, 或删除MMC卡上的密码?

答: 如果您忘记了您在S7-300CPU Protection属性中所设定的密码, 那么您只能采用siemens的编程器PG (6ES7798-0BA00-0XA0) 上的读卡槽或采用带USB接口的读卡器 (USB prommer 6ES7792-0AA00-0XA0), 选择SIMATIC Manager界面下的菜单 File→S7 Memory Card→delete 选项删除MMC卡上原有的内容, 这样MMC就可以作为一个未加密的空卡使用了, 但无法对MMC卡进行解密, 读取MMC卡中的程序或数据。

[返回](#)