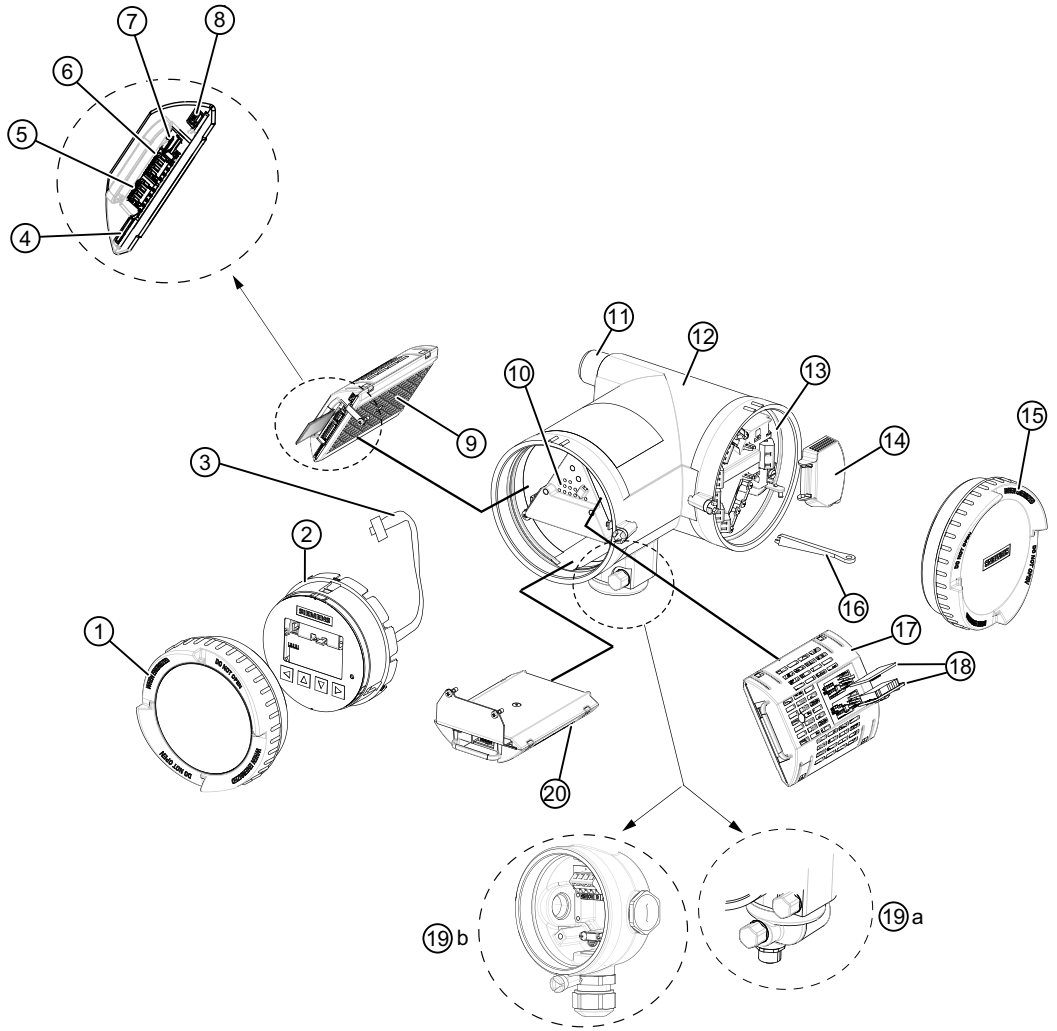


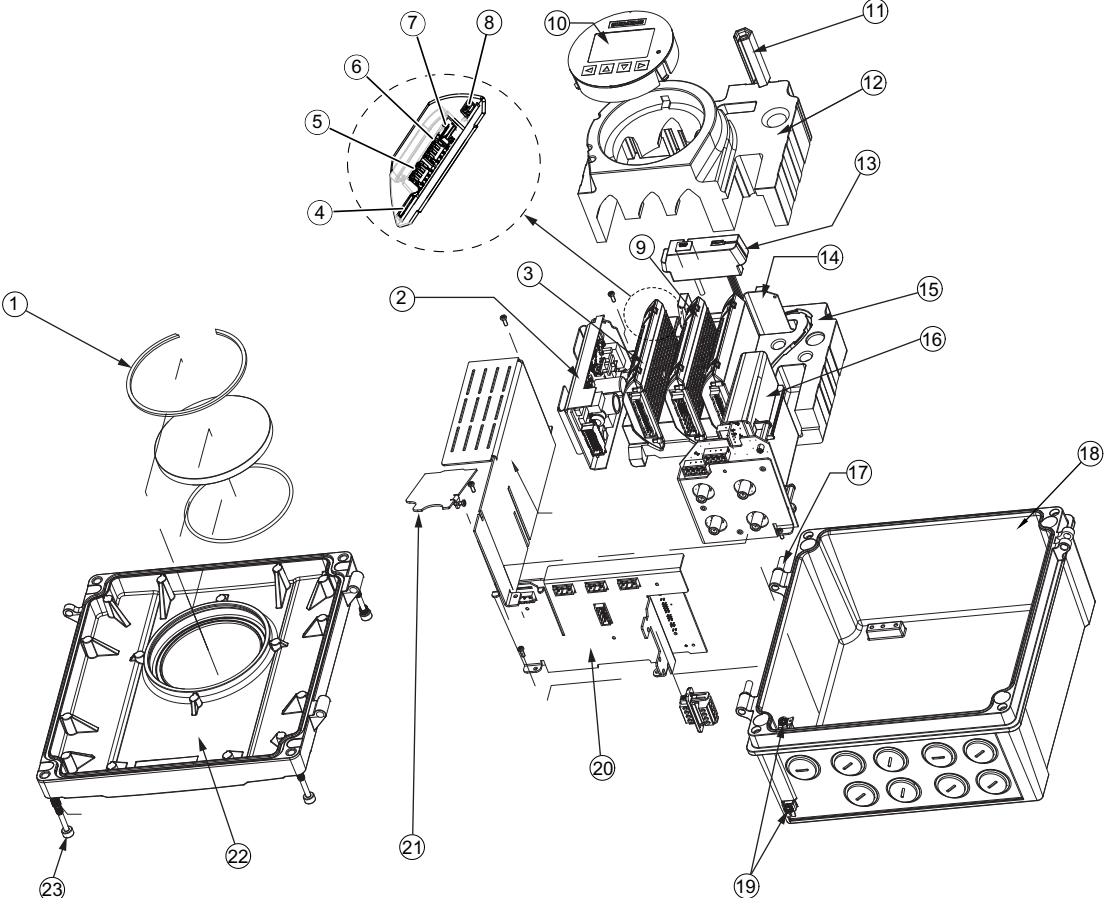
Industrial enclosure



- |  |  |
|--|--|
| ① Display cover                              | ⑫ Transmitter housing                    |
| ② Local display                              | ⑬ Terminal space                         |
| ③ Connector for display                      | ⑭ Power supply terminal protection cover |
| ④ SD card (SensorFlash®)                     | ⑮ Lid for terminal connections           |
| ⑤ DIP switch (reserved for custody transfer) | ⑯ Wiring tool                            |
| ⑥ DIP switch (for HART)                      | ⑰ I/O cassette (optional)                |
| ⑦ Display port                               | ⑱ I/O configuration keys (optional)      |
| ⑧ USB service port                           | ⑲a M12 socket                            |
| ⑨ Transmitter cassette                       | ⑲b Terminal enclosure                    |
| ⑩ Heatsink cover for power supply module     | ⑳ Barrier cassette                       |
| ⑪ Cable entry                                |  |

Figure 4-1 Industrial enclosure transmitter variant exploded view

Wall mount enclosure



- ① Display glass with retaining ring
- ② Power supply module
- ③ Transmitter cassette
- ④ SD card (SensorFlash)
- ⑤ DIP switch (reserved for custody transfer)
- ⑥ DIP switch (for HART)
- ⑦ Display port
- ⑧ USB service port
- ⑨ I/O cassette (optional)
- ⑩ Local display
- ⑪ F connector tool
- ⑫ Foam top
- ⑬ Foam plugs
- ⑭ Barrier cassette
- ⑮ Foam insert
- ⑯ DSL cassette (if ordered)
- ⑰ Hinge pin
- ⑱ Housing
- ⑲ Ground connect set
- ⑳ Backplane module
- ㉑ Power supply connector cover
- ㉒ Front cover
- ㉓ Front cover mounting screws

Figure 4-2 Wall mount enclosure transmitter variant exploded view